

Nautique's Marsha Malone gives a Florida family
the Cape vacation cottage of their dreams



A Summer Sanctuary

By Susan Dewey | Photography by Dan Cutrona





This was a great project for Cape Cod interior decorator Marsha Malone. A couple from Fort Lauderdale, Florida were building a new summer home in Harwichport and they walked into her Brewster company, Nautique, and asked her to create all the interiors—from basement to attic—for their Cape Cod vacation home.

“The couple said, ‘Can you wave your magic wand and give us that coastal-inspired, Nautique feeling?’ They wanted the house to be everything Cape Cod,” says Malone, who co-owns Nautique and the Seaport Shutter Company with her husband, Peter.

The Malones’ multi-faceted company—which features several interior and exterior design divisions, including two furniture design and manufacturing lines, the Nautique Coastal Collection and the Nautique Sail Loft Collection and a Nautique Lighting Collection line—was the perfect choice for a young family living far away from Cape Cod. “They told us what colors they liked and said they wanted quintessential Cape décor, but other than that they wanted us to do absolutely everything for the house,” says Malone.

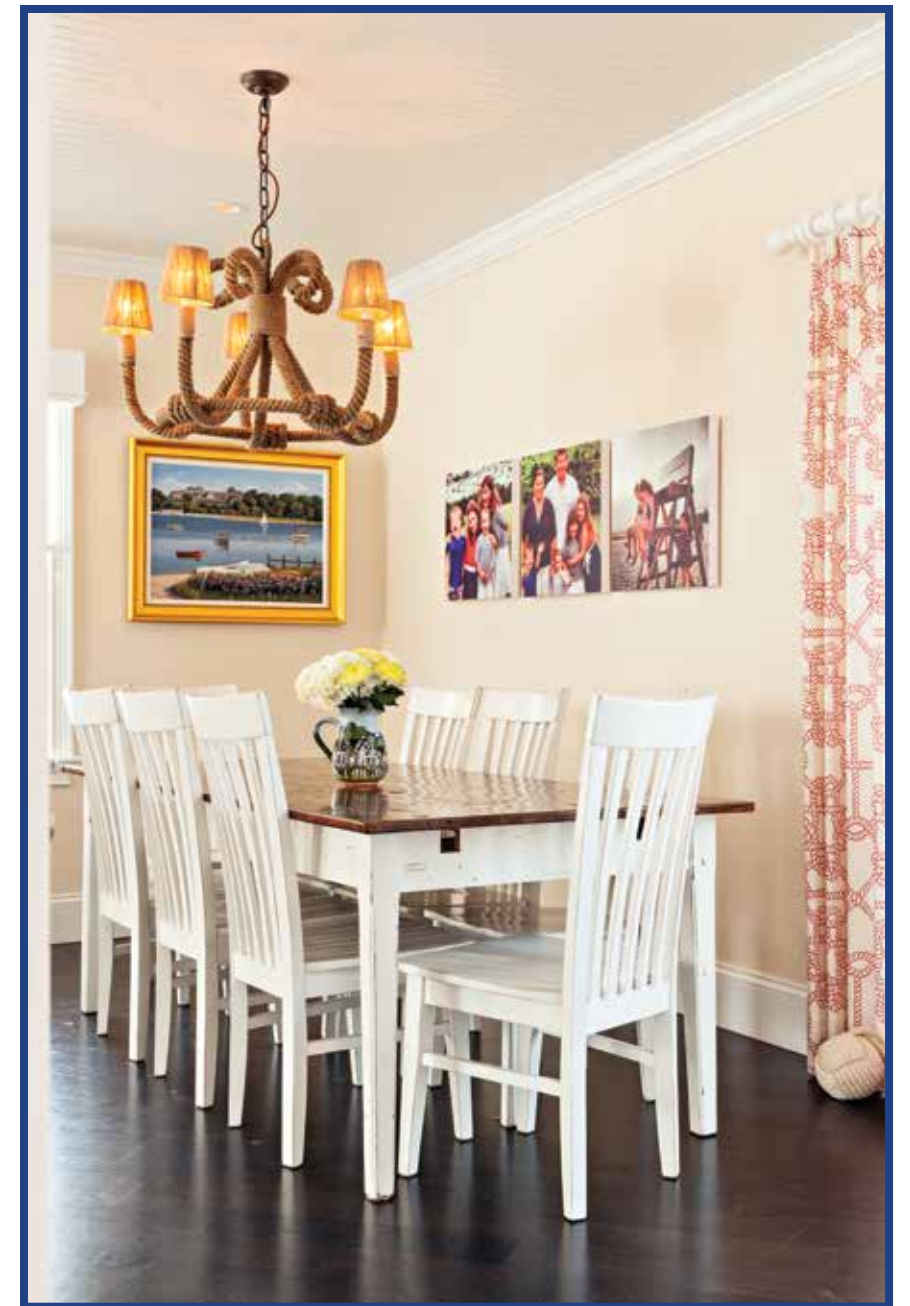


“Except for choosing a few fabrics, they really gave us full rein. It was a wonderful creative experience.”

The husband’s desire for a Cape house was inspired by his youthful memories of summer days working at Harwichport’s legendary Thompson’s Clam Bar. “He always loved Harwichport and they belong to the Wychmere Harbor Club, so this small condominium complex of homes on a cul de sac—right in the center of town—was a perfect choice,” Malone says.

At first glance, the compact Cape-style house looks like a small space for the family of six, which includes two girls, and boy and girl twins. “This is not a large house, so for a big family, everything has to have a function,” says Malone, noting that a Nautique specialty is the construction of coastal-inspired furniture, lamps, and decorative accents designed and manufactured to fit each homeowner’s unique spatial and lifestyle requirements.

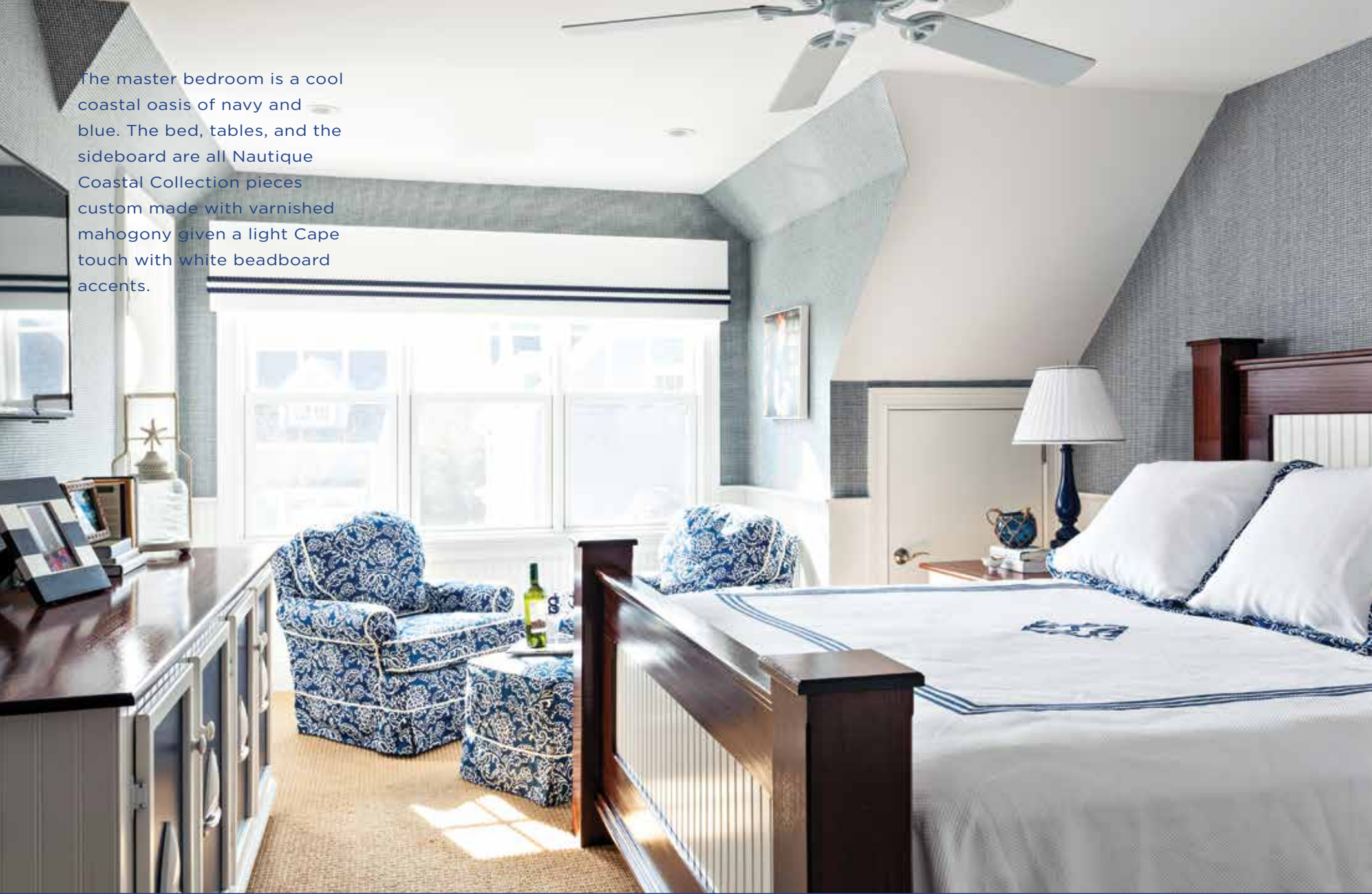
One of five freestanding homes in the complex, the house has an open first floor that encompasses the kitchen and two living room areas, each with comfortable seating and dining spaces. Malone’s design palette for the entire first floor is based on summery red, yellow, blue, and white colors for fabric, paint, and tile choices. Comfortable, deep-stuffed sofas and armchairs throughout are upholstered in sturdy duck or cotton fabric, combining nautical ambiance with child-friendly durability.



Designer Marsha Malone worked with a bright summery palette of primary colors throughout the house, starting with the front door, opposite, which was designed and constructed by the Seaport Shutter Company.

‘Can you wave your magic wand and give us that coastal-inspired, Nautique feeling?’

The master bedroom is a cool coastal oasis of navy and blue. The bed, tables, and the sideboard are all Nautique Coastal Collection pieces custom made with varnished mahogany given a light Cape touch with white beadboard accents.



The master bath features subtle seaside tones in tile and paint choices. A custom designed cornice features decorative rope trim, tying into similar window treatments in the master bedroom.

In both living areas, handsome tables, sideboards, and a hutch were designed and created by one of the furniture divisions, the Nautique Coastal Collection. Malone points out some signature pieces in the line, such as a large, glass-topped table with a hand-painted map of Cape Cod.

“This is such a perfect place for the kids to play games on, or for the family to gather around,” says Malone, noting that she designed the table to be high enough for additional seating provided by colorful ottomans in vivid blue and red stripes.

“We have an artist on our staff who does all our artwork,” says Malone, also pointing out four high wooden chairs

at the kitchen counter, each emblazoned with a child’s name painted in bright nautical signal flags. The artist also hand-painted several custom-designed lampshades for the house, integrating Malone’s color choices and coordinating her coastal designs throughout.

A second living/dining area glows with the patina of vintage woods, which are the centerpiece of Malone’s second furniture line, the Nautique Sail Loft Collection. “We find the wood mostly in New Hampshire and Maine, where people are taking down old barns and houses and ripping up old floors,” says Malone, pointing out a handsome dining room table with ample seating for family and friends. “It is an opportunity for us to

repurpose all this wonderful New England wood and each piece is original with lovely old nail-holes, saw marks—every piece is one of a kind, which I love.”

The cozy space also features a large sectional sofa in blue brushed cotton buried under colorful marine-life pillows. “This is a great example of using a limited space well,” says Malone. “This living room with the big sectional sofa is just a wonderful space where they can all curl up together and watch TV.”

A tall hutch painted a vivid red—part of the Nautique Sail Loft Collection—was designed with spare New England farmhouse lines. “I chose the wood and had our

guys make the hutch to give the room a terrific pop of color,” says Malone, pointing out other colorful accents throughout the room, such as hand-painted lampshades. “Our lighting collection makes it possible to have a coordinated design theme throughout,” says Malone, explaining that all the bases of the lamps in the house are replicas of old-fashioned porch posts and balustrades. “It gives such a vintage New England feeling to the house,” the designer notes, also pointing out the use of classic Cape elements such as beadboard for several pieces of furniture as well as on the walls of the bathrooms.

Window treatments were shaped with designs initially created for the Seaport Shutter Company, which is

The basement is painted a sunny yellow, providing a cheerful space for rainy day fun as well as extra sleeping space for friends and guests. A custom made table in vintage wood is part of the Nautique Sail Loft Collection.



“This is not a large house, so for a big family, everything has to have a function.”

managed by Malone’s husband, Peter. The Nautique divisions were in fact inspired by Seaport Shutter, a company well-known on Cape Cod and the Islands for the design and manufacture of customized screen doors and shutters with unique coastal applique accents.

Malone points to window cornices in the living room, explaining that she needed to come up with a way to minimize useful—but not especially beautiful—shades for privacy and security purposes. “The wooden cornices, decorated hand-carved rope accents and hand-made, 23-karat-gold catboat appliques, were inspired by Seaport Shutter,” she explains. “When the shades are down, the windows still look beautiful.”

The second floor features three bedrooms, two baths, and a special play area, all tucked in under the eaves giving a classic Cape Cod cottage coziness to the entire space. In the master bedroom, an elegant king-sized bed is a custom-designed Nautique Coastal Collection piece. “We designed and built the bed to coordinate with a matching sideboard and bedside tables—all of mahogany,” says Malone, pointing out nautical details such as cleats on the ends of the sideboard.

The mahogany top is painted with multiple coats of Spar varnish, just like the Seaport Shutters screen doors. “These pieces are beautiful, but indestructible,” says Malone, noting that wet glasses, sandy bathing suits, and children’s toys will not make a mark on such a finish.

The girls’ room is ultra-feminine, yet anchored with touches of deep navy in Nautique Coastal Collection beds decorated with hand-painted initials.



A sunny seating area of two comfortable chairs upholstered in lyrical navy and white fabric coordinated with initialed bed linens by Matouk anchors one end of the room. Malone points out a small desk area tucked under one eave on the other side of room. “We used every available inch of space,” she says with a laugh.

Malone’s inspired choice of subtly textured wallpaper in a blue and white lattice-like pattern gives the room a touch of sophistication, yet continues the nature-inspired coastal décor. These motifs are continued in the master bath, which is painted and tiled in muted seaside hues with nautical decorative touches such as shower tiles with a flowing wave design.

In two whimsical children’s rooms and a cozy pass-through play area, Malone’s playful spirit and great sense of fun is in evidence. “I just loved doing the children’s rooms,” says Malone, whose daughter Lauren is the sales and marketing director for Seaport Shutter.





For the family's two oldest daughters, Malone designed a true "girly-girl" delight—a pink, white, and navy blue confection centered around a pink curly-cue chandelier surrounded by rhinestones embedded in the ceiling. Nautique Coastal Collection beds are decorated with hand-painted initials for each girl, and a wall of sunny windows is framed with an elegant cornice upholstered with pink fabric edged with navy welting.

The second bedroom had to meet a unique requirement, since it had to be created for the twins—a boy and a girl. "We decided to create different, but complementary

spaces for both," says Malone, pointing out the sweet, pastel-hued bed linens and pillows decorating the girl's bed, which are color coordinated with boyish linens on the boy's bed. A small window seat is tucked into a sunny window with drawers below for toys and books. Malone designed a special, child's-height Nautique Coastal Collection wardrobe, with shelves and drawers for each child.

A marvelous touch on the ceiling is the hand-painted "Twinkle Twinkle Little Star" with a starfish applique right above the beds. "It's just the kind of room where you

Tucked under the eaves in true Cape cottage style, the twins' (one boy and one girl) bedroom is a cozy place to play, read a book, or dream of starry nights. Bold stripes, bright graphics, and colorful accessories evoke summer days by the sea.





want to stay and play,” says Malone. There is a second play area with a flat screen TV for all the children in a pass-through area in the hallway. A large couch upholstered in brightly colored sailboat fabric folds out for sleepover fun.

The basement has been transformed into a bright spacious entertainment area with numerous couches, a separate bath, and a workroom—all providing the family with space for extra guests, or rainy day activities for the whole family. Of course, the weather on Cape Cod is almost always delightful for this Sunshine State family, who cherish the Cape’s cool sea breezes and comfortable sunny days as much-anticipated relief from the heat of Florida summers.

“They really have the best of both worlds,” says Malone. “They don’t have to face our New England winters, but they get to enjoy Cape Cod at its very best while living in their dream house all summer long.”

For more information, visit nautiquecapecod.com.

Susan Dewey is the editor in chief of Cape Cod Life Publications.

Pops of color—such as a red hutch handmade in Nautique’s workshops—and customized seaside touches on upholstered pieces, pillows, and furnishings add drama and fun to every room in the cottage.

